



July 15, 2009

Celery Fields Regional Stormwater Facility Expansion

Date: Wednesday, July 15, 2009

Time: 5-7 p.m.
Presentation at 5:30 p.m.

Place: Fruitville Library
100 Coburn Road, Sarasota

Sarasota County does not discriminate with regard to any programs, services or activities and does not tolerate discrimination. As such, it solicits public participation without regard to race, color, religion, sex, age, national origin, disability or family status. Persons needing special accommodations under the American Disabilities Act of 1990 or language services (free of charge) should contact the Sarasota County Call Center at 941-861-5000 (TTY 941-861-1833) at least seven (7) days prior to the event.

You are invited to a public meeting about the design and upcoming construction plans at the Celery Fields Regional Stormwater Facility located on the south side of Fruitville Road. See map for project boundaries.

The purpose of this project is to provide floodplain storage, reduce flooding and improve the quality of water flowing from the stormwater facility to the bay. The project is designed to reduce street and structure flooding of 15 homes downstream of Phillippi Creek.

After construction is complete, the area will continue to be a passive recreation facility for public use. Planned as part of the construction are:

- Walking trails around the perimeter of the facility
- An improved walking and bike trail on the proposed observation hill
- Expanded parking area at the gazebo

During construction, the existing parking and gazebo area will be closed to public use. Alternative parking is available at Ackerman Park and Fruitville Library. Additionally, various sidewalks in the area and portions of the Celery Fields facility will be closed for public safety during construction. The county appreciates the public's cooperation in respecting the areas closed during construction.

While this stormwater project is under construction, two other county projects will be underway in the same area. A temporary fire rescue station will be built at

the intersection of Apex and Palmer roads and the wooden bridge on Raymond Road will be replaced with a new concrete structure. A permanent fire station will be constructed at the Apex and Palmer site beginning in late 2011.

Construction of this project requires the use of heavy machinery and earthmoving equipment. There will be a temporary detour at South Leewynn Drive for a pipe replacement. The traveling public should expect other minor traffic detours and inconveniences with construction equipment transiting the project area along Palmer, Center, Apex, Raymond and Coburn roads.

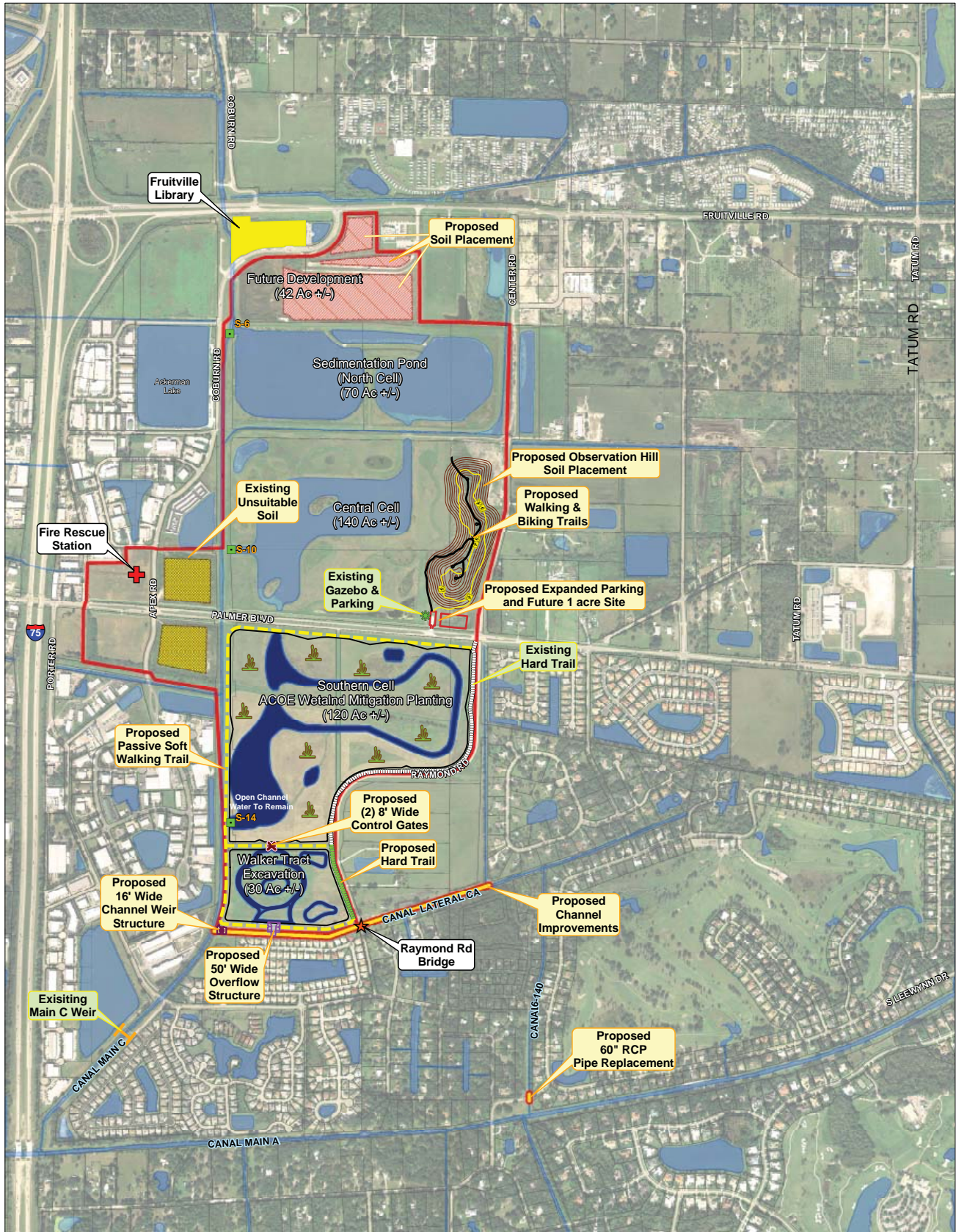
Work will begin in late summer 2009, and is expected to be completed in late 2010.

All areas will be restored to their original or better conditions following completion of the work. A detailed video of all properties along the route will be produced prior to construction to ensure that all areas are restored to pre-construction conditions.

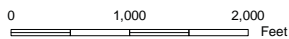
Cost of the project is \$7.2 million. Funding is through a combination of Southwest Florida Water Management District grant funds, a Florida Department of Environmental Protection 319 grant and the existing Phillippi Creek basin stormwater capital improvement assessments.

Contact the Sarasota County Call Center at 941-861-5000 for additional information.

Celery Fields Regional Stormwater Facility



This map is produced from Sarasota County GIS, and is representative information only, not survey information. The County does not warrant, guarantee, or assume any responsibility for geographic information completeness and/or accuracy. This map should not be used as a guide to navigation. Copyright © SCGIS 2010.



	Existing Control Gates		Celery Fields Project Area
	Existing Main C Weir		Existing Unsuitable Soil
	Canal & Pipe Improvements		Soil Placement
			Water Features



Sarasota County
 scgov.net | 941.861.5000 | TV
 Map edited by Jim Grimes of Sarasota County
 Water Core Service on June 30, 2009 using ArcMap 9.3.1
 Aerial Photography: © resolution was from January 2007.
 Spatial Reference: FL State Plane W NAD 83.